

Get In Touch

(021) 27874386/ 29406397/ 29406398/ 29406399/ 29406400
(021) 27874399

depriwangga-om@depriwangga-om.com

www.depriwangga-om.com

Jl Jatipadang Raya No 56
Pasar Minggu
Jakarta Selatan 12540

Jl. Taman Cilandak IV No A3,
Cilandak Barat,
Jakarta Selatan 12430



PT Depriwangga OM



Company Profile Business

Mechanical Maintenance - Electrical & Instrument Maintenance
Lifting & Heavy Equipment Operation Maintenance
Civil Structure Maintenance - Construction & Fabrication Services
Road Maintenance



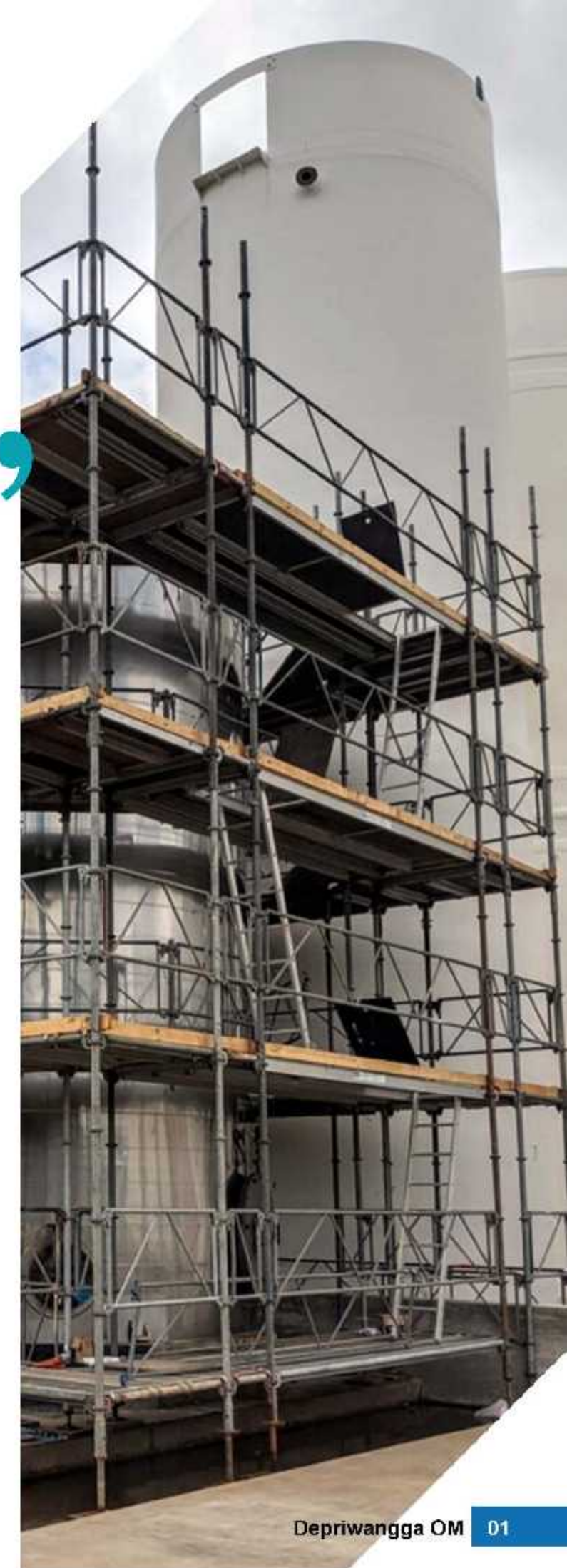
INTRO

"Committed to your satisfaction"

PT Depriwangga OM, headquartered in Indonesia, specialized in operation and maintenance services including Plant Maintenance, Facility Maintenance, Road Maintenance, Civil Maintenance, Facility Management, Operation Support, Operational Readiness, Preventive and Corrective Maintenance with safety oriented operation excellence.

Established since 2009, we have worldwide experience, high qualified with deep technical knowledge personnel and certified equipment and tools supported with high standard workshop. Understanding the client needs and expectation and exceeding the expectations is the key of every project's success.

We believe our best, effective and efficient solution will bring better serve to client.



ABOUT US

Our Vision, Mission And Values

A vision, mission, and values is a tool to help us, PT Depriwangga OM accomplish what it has set out to do and helps provide a framework for strategy, focus and decision making. Our vision are:

TO BE THE LEADING IN OPERATION AND MAINTENANCE SERVICES COMPANY IN INDONESIA

To achieve the above vision and to make the customer satisfaction services with the following commitments:

- **Quality and Technically Achievement.**
- **On Time Schedule of Services.**
- **Focus to Customer Requirement.**

Our Quality

It is the policy of the PT. DEPRIWANGGA OM as Operation and Maintenance Company operates a formal Integrated Quality Assurance system that complies with the requirements of LEEA, ISO 9001:2015, ISO 45001:2018, ISO 14001:2015 and other international standards.

The purpose of this is to enhance our service, maintain existing business and enable the company to take advantage of new opportunities. This will result in success and satisfaction for the Customer Company and individuals. This applies to all aspects of operation, so consequently all staff must be committed to this concept and practice professionalism and system compliance. This must be undertaken and practiced daily in all activities at the workplace.

To ensure we maintain the quality system, it shall be closely monitored both internally and by external certified bodies. The continual improvement is essential for developing our business to be most efficient, effective, and productive.

Management committed to complying with government regulations, customers, and other requirements.



Associate Member



Committed to
your satisfaction

MECHANICAL MAINTENANCE

Mechanical Work

- Oil, Gas and Maintenance Energy Piping Construction.
- Oil, Gas Production and Storage Facilities Engineering Works Including Maintenance
- Thermal, pressurized, oil, gas, geothermal installations Works Engineering Including Maintenance.

Our Services

- Internal Combustion Engine •
- Maintenance and Overhaul •
- Mechanical Alignment •
- Valve Repair and Maintenance •
- Bolting •

Equipment Type

- Diesel Engine
- Pump, Compressor, Turbine
- Various Type of Valve
- Flange

ELECTRICAL & INSTRUMENT MAINTENANCE

ELECTRICAL AND INSTRUMENT

The use of electric power, and electrical equipment is very common in modern industry. Usually it comes with instrument as equipment control system. It is very important to keep that equipment reliable, along with their instruments, to ensure their safe use, accurate parameters, and optimum performance.

Electrical and instrument maintenance covers electrical systems inspection, testing, monitoring, replacing all electrical parts as needed, regulating and maintaining measurement systems to keep systems and machines working properly. They are also responsible for electronic and pneumatic process control systems and safety system



Electrical & Instrument Work

Medium Voltage Electricity Distribution Network Maintenance,

Medium voltage power distribution maintenance,

Control and Instrumentation Installation and Maintenance

Building and Factory Electrical Installation and Maintenance



Other Electrical Installations Including Maintenance.

Installation Air Conditional (AC) Including Maintenance

LIFTING AND HEAVY EQUIPMENT OPERATION AND MAINTENANCE

One of the most risky activities on a worksite is lifting and heavy equipment operation. In some cases, it turns into a catastrophic disaster. PT Depriwangga OM offers the safe operation of lifting and heavy equipment by providing competent operation personnel. Our competent people for lifting and heavy equipment include operators, riggers, signalmen, drivers, and engineers.

To ensure the safe use of lifting and heavy equipment, PT Depriwangga OM also delivers customized maintenance program for the equipment. It would refer to OEM standards, any related international standards, and customer requirements. Our maintenance team is equipped with the latest modern tools and great technical knowledge

Service Specialty

- Lifting equipment Operation and Maintenance
- Lifting Gear Inspection
- Heavy Equipment Operation and Maintenance
- Lifting and Heavy Equipment Rental and Services

Equipment Type

- Cranes :
Offshore crane, mobile crane, Overhead crane
- Lifting Gear
- Forklift, Telehandler, Manlift
- Heavy Equipment :
Bulldozer, Excavator, Vibro Compactor, Motor Grader, Dump Truck, Trailer

CML STRUCTURE MAINTENANCE

Civil Structure Maintenance

We can bring your faint and messy facility back to shine reflecting your strong personality. We do everything from cosmetic touch-ups to minor or major maintenance. We maintain your building and structure not only for its appearance but also for its function and safety. Blasting, surface preparation, painting, and coating, performed by applying international standards, supported by scaffolding services if necessary.

We also do land preparation for your future development. Creating access ways, cutting trees, creating slopes, leveling and compacting the ground. We deliver the service with respect to health, safety, and environmental standards



Our Services

- Warehousing And Industrial Buildings Contruction and Maintenance
- Highways, Environmental Roads, Local street Maintenance
- Harbor or Jetty Maintenance
- City Drainage Construction and Maintenance
- Grouting
- Scaffolding Instalation
- Painting, Blasting and Coating
- Land Preparation
- Excavation

Facilities

- Land of Onshore Production Facility
- Foundation/Support Piping and Equipments
- Offshore and Onshore Structure

CONSTRUCTION AND FABRICATION SERVICE

Construction and Fabrication Service

Production facilities, from upstream to downstream, consist of various types of construction and materials. Sometimes it needs modification, improvement, or repair based on its specific purpose. Following those requirements, our construction and fabrication teams bring first-class solutions to our clients, to make their facility always in peak efficiency. From the engineering stage through construction or fabrication, we deliver the service in a timely manner, efficient, safe, and reliable. Our construction and fabrication team strength points are brilliant engineers, experienced field technicians, i.e.: Foreman, Welders and Fitters, and complete sets of tools and equipments

Our Services

Provision of Design, Fabrication and Construction for Onshore and Offshore facility including :

- Piping Fabrication and Instalation
- Storage Tank Maintenance
- Grating and Support Fabrication, Removal and Installation
- Structural Steel Works
- Pipeline Instalation
- Insulation

Facilities

- Metal/HDPE Process Piping
- Piping Mechanical Structure Offshore and Offshore Production Facility
- Gas Compressor Station
- Metering Station
- Pipeline
- LNG and CNG Plan

ROAD MAINTENANCE

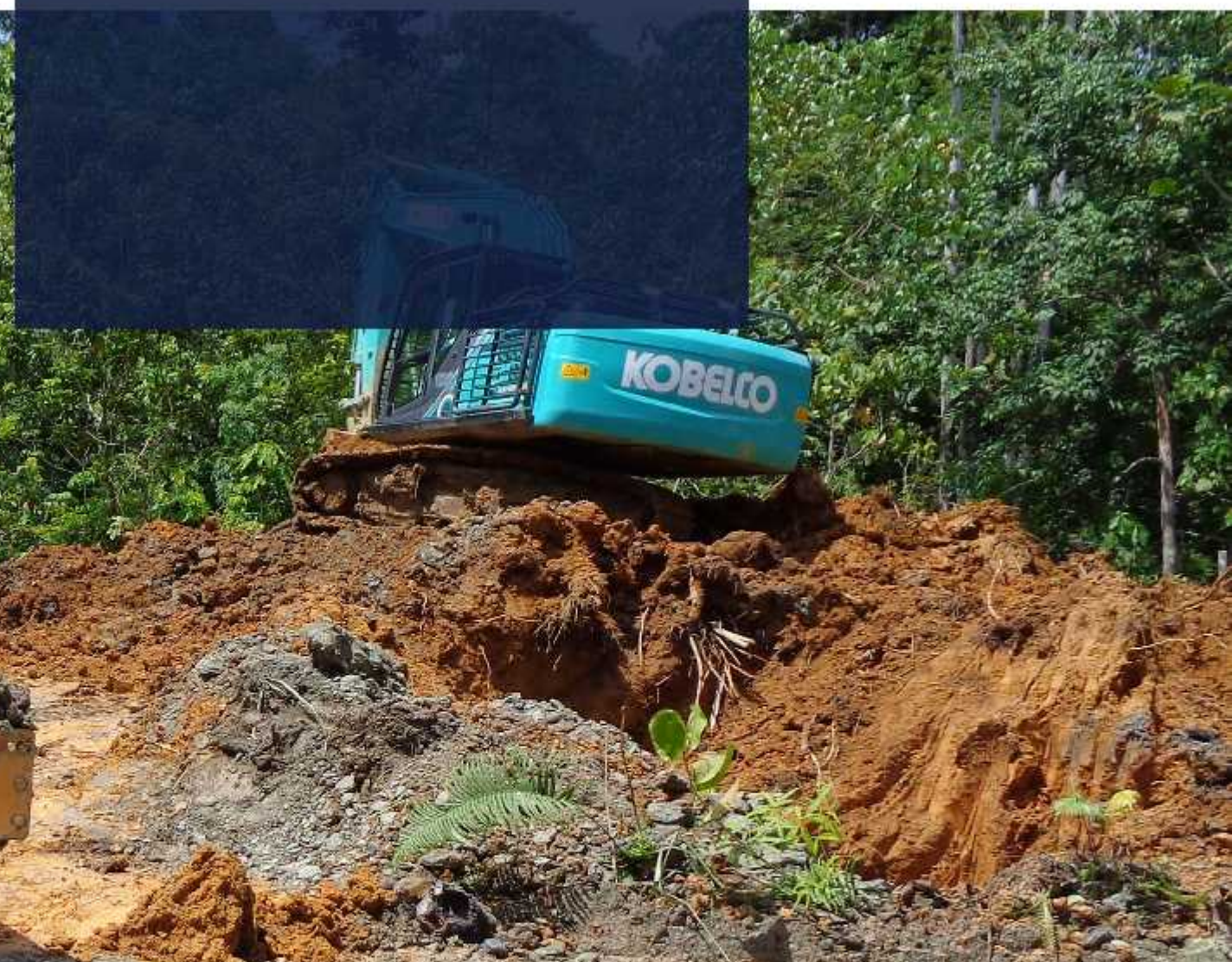
Road Maintenance

It is important to make sure Our Clients facility is always easily accessible by land for any purpose. Logistic, personnel and equipment transportation, product delivery, up to emergency evacuation, all need smooth road access.

Since road access is a vital infrastructure, we maintain your accessibility by providing road maintenance and earth moving equipment such as Bulldozers, Excavators, Motor Grader, Vibro Compactor, supported by Dump Truck/Hauler. We fully understand that most of our client's facilities are located in remote areas. That's why our road maintenance team is a combination of both technical skilled and harsh environment survival skilled personnel.

Our Services

- Repair/ Upgrade of existing Road and Bridges
- Contruction of New Access Road and Bridges
- Maintenance of Access Road
- EarthWork



OUR MAJOR CLIENTS



List of Clients

- o BP Berau Ltd
- o PT Pertamina Hulu Energi ONWJ
- o PT Pertamina Hulu Energi WMO
- o PT Pertamina Hulu Energi NSO
- o Premier Oil Natuna Sea BV
- o Medco E&P Natuna
- o Medco Energi Sampang Pty Ltd
- o Medco Madura Offshore Pty Ltd
- o PT Medco E&P Malaka
- o Conoco Philips Indonesia Inc.Ltd
- o Medco Energi Bangkanai Ltd
- o Saka Indonesia Pangkah Limited
- o Saka Energi Muriah Limited
- o ExxorMosil Cepu Limited
- o PC Ketapang II Ltd
- o PC Muriah Ltd
- o PT Shell Manufacturing Indonesia
- o PT JGC Indonesia
- o But Teras Offshore Ptc
- o PT Donggi Senoro LVG
- o PT Teras Marine Indonesia
- o PT Megatama Internal
- o PT Pelayaran Kanaka
- o PT Waskita Karya (Persero) Tbk
- o PT Pertamina Hulu KalimantanTimur
- o PT Meindo Elang Indah
- o PT Alatas Indonesia
- o PT PP (Persero) Tbk
- o Kuala Tanjung (Waskita) - Sumatra Utara
- o Santika Pendopo - Sumatra Selatan
- o PHKT Balikpapan - Kalimantan Timur
- o Medco Bangkanai, Barito - Kalimantan Tengah

From the moment of establishment until now, we have served many organizations through our valuable and professional services. We are proud to mention that our client list.

Our Facility



Workshop



Tools And Equipment



Heavy Equipment



Head Office

